

## 1. PRINTING OF SHEETS.

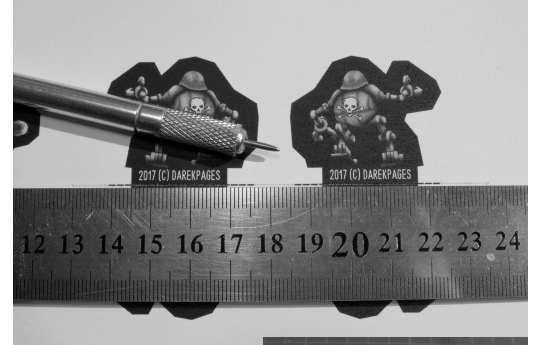
It is best to print with an inkjet printer. On photo mat paper, weights 160-220g/cm<sup>2</sup>. For a scale of 28 - 32mm, prior to printing, set Acrobat Reader to scale = 100%. By scaling the print, you can get other dimensions of the miniatures. In the printer driver settings, you can get a different print tint.

## 2. ROUTINGS FOLDS

Fold the folds on the metal ruler with a suitable tool, or used up ball pen.



## 3. COARSE CUT FROM THE SHEET.

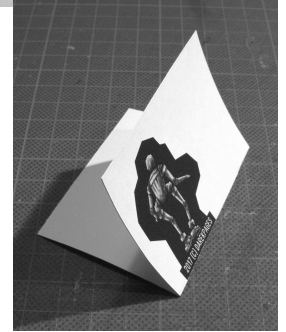


## 5. GLUING

It is best to glue with a good glue stick, or other.



## 4. FOLD ELEMENT

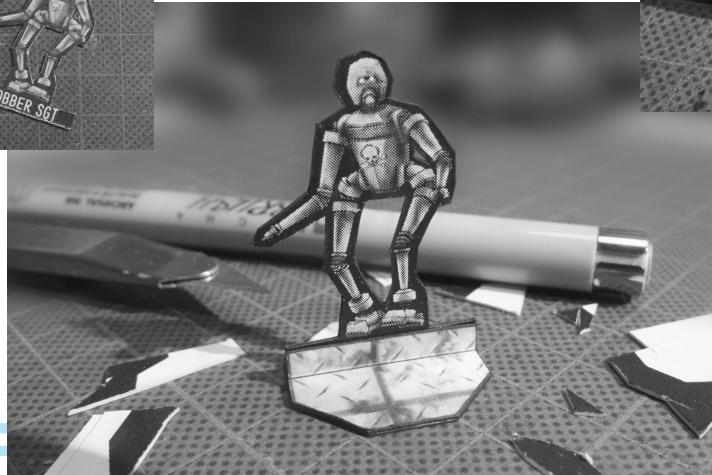


## 7. CUTS



## 6. STRONG PRESSURE

## 8. RETOUCH EDGES



## 9. END